

## XYR 5000

## Wireless Management Toolkit

34-XY-01-06 12/2004

PRODUCT SPECIFICATION AND MODEL SELECTION GUIDE

### Function

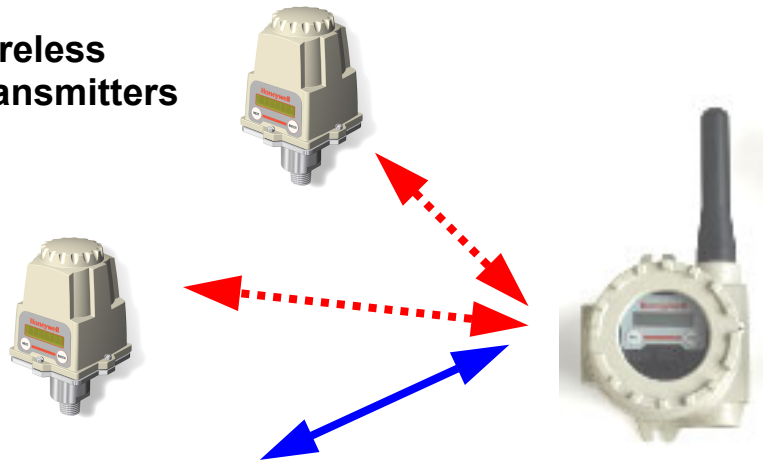
The Wireless Management Toolkit is part of the XYR 5000 family of wireless products. This Toolkit is the services management software for the Wireless product family. Services management includes XYR 5000 component management (such as configuring the Quad Analog Output Modules, and field unit threshold settings), process monitoring in real time, and data acquisition.

The software Performance Management, Configuration Management, Reporting and Analysis, and combines Fault Reporting.

Enjoy the benefits of wireless technology today:

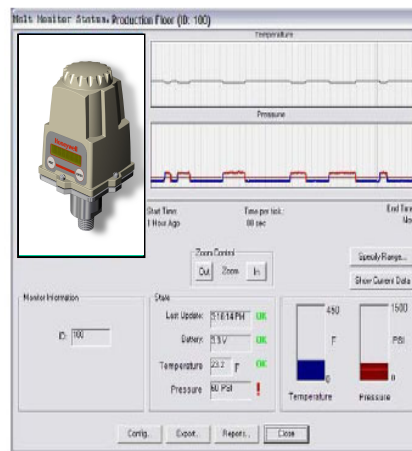
- Improve Product Quality
- Ensure High Uptime
- Reduce Maintenance and Operational Costs
- Meet Regulatory Requirements
- Enhance Flexibility.

### Wireless Transmitters



### Base Radio

- RS-485
- 4-20mA
- RS-232



### Wireless Management Toolkit

<b>Model</b>	<b>WMSW1</b> (Wireless Configuration and Data Acquisition Software)
--------------	---

## SOFTWARE

<b>Architecture</b>	Microsoft Windows based software. Embedded Microsoft Access database.
---------------------	--

## SYSTEM REQUIREMENTS

<b>PC</b>	<ul style="list-style-type: none"> <li>• 300 MHz or higher processor clock speed recommended.</li> <li>• Intel Pentium/Celeron Family, or AMD K6/Athlon/Duron Family, or compatible processor recommended.</li> <li>• Microsoft Windows 98 Second Edition, Windows 2000, or Windows XP Operating System.</li> <li>• 256 MB of RAM or higher recommended.</li> <li>• 10 GB if the database is installed on the local PC.</li> <li>• RS-485 port or RS-232 serial port.</li> <li>• Super VGA (800 X 600) or Higher-Resolution video adapter and monitor.</li> <li>• CD-ROM or DVD Drive.</li> <li>• Keyboard and Microsoft mouse or compatible pointing device.</li> </ul>
-----------	--

## SOFTWARE FEATURES

<b>Fault and Performance Management</b>	<ul style="list-style-type: none"> <li>• Field Unit Groups.</li> <li>• Field Unit View. (Tag Number [up to 21 characters], Monitored Asset, Unit ID, Device Type, Status).</li> <li>• Field Unit Status View. (OK, Threshold Alert, RF Failure, Low Battery).</li> <li>• Base Radio View. (Tag number [up to 21 characters], Serial Number, RS-485 Address, Number of Field Units, 4 – 20 mA Output, Status).</li> <li>• Output Devices.</li> </ul>
<b>Configuration Management</b> (Field Unit Variables)	<ul style="list-style-type: none"> <li>• Sensor Sampling. (Heartbeat, Normal, Thresholds).</li> <li>• Thresholds. (High and Low Thresholds, Custom Threshold Message).</li> <li>• Mapping discrete inputs/outputs</li> </ul>
<b>Reporting and Analysis</b>	<ul style="list-style-type: none"> <li>• Database values contain the asset conditions over time. Data can be exported to perform analysis and create reports.</li> </ul> <p>Export data formats:</p> <ul style="list-style-type: none"> <li>Text (.txt).</li> <li>Comma Separate Values (.csv).</li> </ul>

# Model Selection Guide

## XYR 5000 Wireless Management Toolkit

Model Selection Guide  
34-XY-16U-06 Issue 1

Honeywell Confidential & Proprietary

### Instructions

- Select the desired key number.

Key Number     Table I

-----     -     --

KEY NUMBER	Selection
Description	
Wireless Configuration and Data Acquisition Software	WMSW1

### TABLE I - SOFTWARE

Description		
Wireless Management Software CD - SITE SOFTWARE LICENSE REQUIRED (1)	SL	•
Wireless Management Software CD - SITE SOFTWARE LICENSE IN PLACE	CD	•

(1) A site software license is required for the first WMT purchased by a company.  
The customer can make additional copies as required for the site, or order as WMSW1-CD.

**Note - Wireless Management Toolkit Software is not available for resale because of site license restrictions.**

